

THIN BRICK



FREEDOM OF EXPRESSION

The freedom to add brick where previously thought impossible or impractical, Endicott thin brick clears the way for innovative, visually stunning solutions that are easy to install, affordable and hard to ignore.

WITH ENDICOTT
THIN BRICK,
LESS IS MORE.

Endicott

DISCOVER NEW WAYS TO ACHIEVE YOUR UNIQUE ARCHITECTURAL VISION WITH ENDICOTT THIN BRICK. SUITED TO YEAR-ROUND COMMERCIAL, RESIDENTIAL AND REMODELING APPLICATIONS, ENDICOTT THIN BRICK IS THE IDEAL CHOICE FOR PRECAST, TILT-UP, PREFABRICATED WALL, AND JOB-APPLIED PROJECTS.

Brick Color: Manganese Ironspot

Augsburg University, Hagfors Center – Minneapolis, MN

BOSTON COLLEGE FISH FIELD HOUSE



CHESTNUT HILL
MASSACHUSETTS



PROJECT DETAILS

COLOR

Desert Ironspot Dark
Coppertone

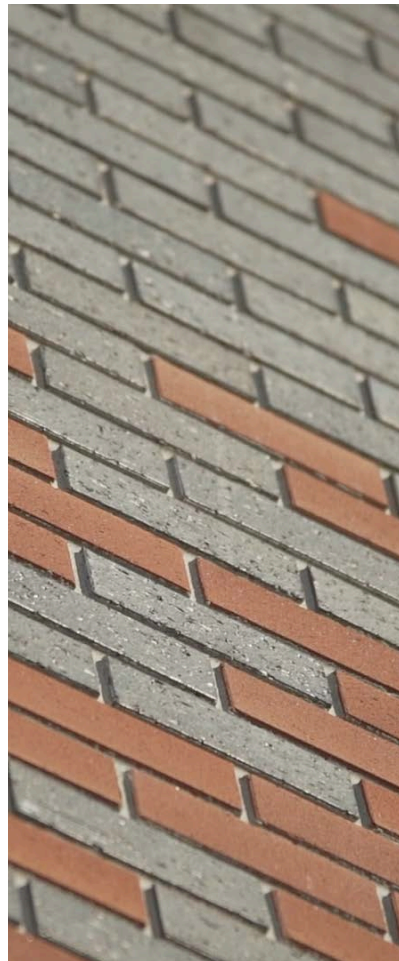
SIZE

Modular

TEXTURE

Velour

DANIEL YOUNG ELEMENTARY



BLUE SPRINGS
MISSOURI



PROJECT DETAILS

COLOR

Burgundy Sands
Manganese Ironspot

SIZE

Modular

TEXTURE

Velour
Sanded

DC WEST ELEMENTARY SCHOOL



VALLEY
NEBRASKA



PROJECT DETAILS

COLOR

Dark Sandstone

SIZE

Modular

TEXTURE

Artisan

AUGSBURG UNIVERSITY, HAGFORS CENTER



MINNEAPOLIS
MINNESOTA



PROJECT DETAILS

COLOR

Medium Ironspot #46
Manganese Ironspot
Dark Ironspot

SIZE

Norman

TEXTURE

Smooth

COLORS



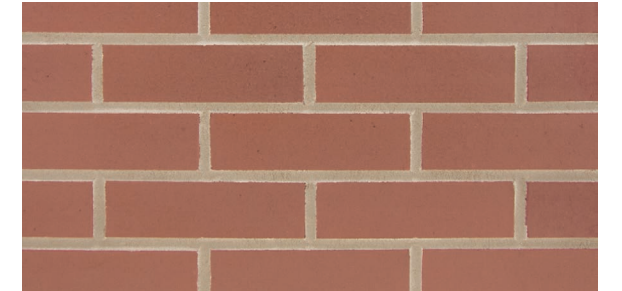
Ivory Blend



Golden Buff



Red Blend



Burgundy Blend



Light Grey Blend



Grey Blend



Ruby Red



Red Ironspot



Light Sandstone



Dark Sandstone



Desert Ironspot Light



Desert Ironspot Dark



Buff Blend



Rose Blend

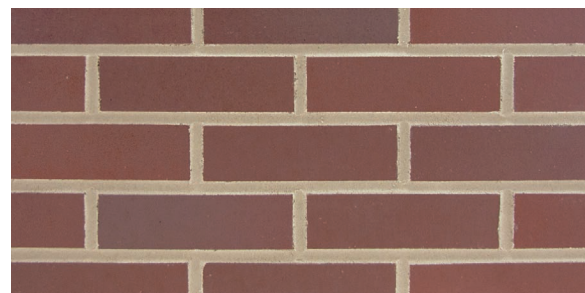


Coppertone



Copper Canyon

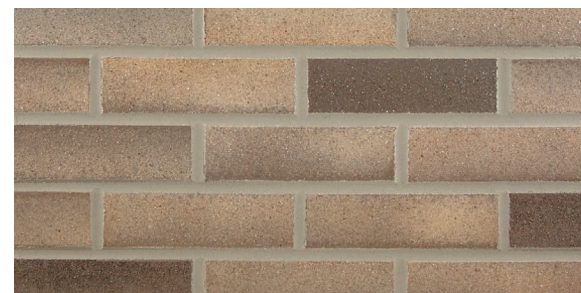
COLORS



Bordeaux Blend



Graphite



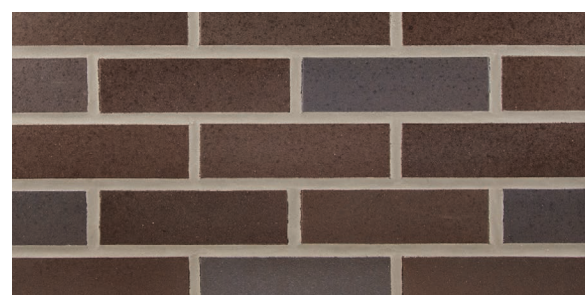
Grey Sands



Merlot Sands



Executive Ironspot



Sienna Ironspot



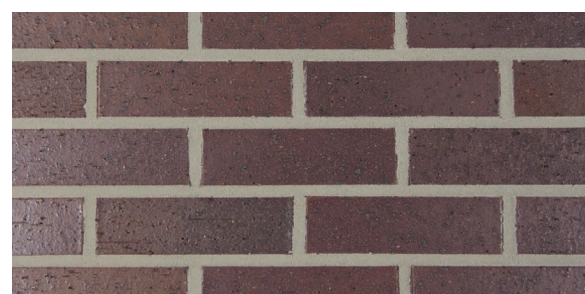
Burgundy Sands



Sahara Sands



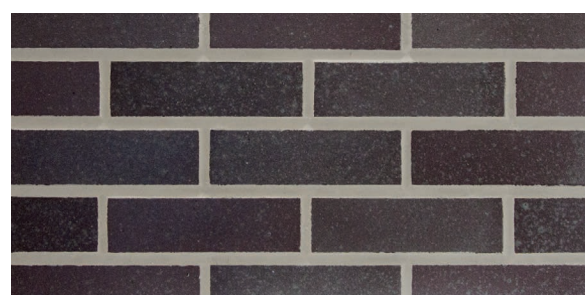
Medium Ironspot #77



Medium Ironspot #46



Autumn Sands



Dark Ironspot

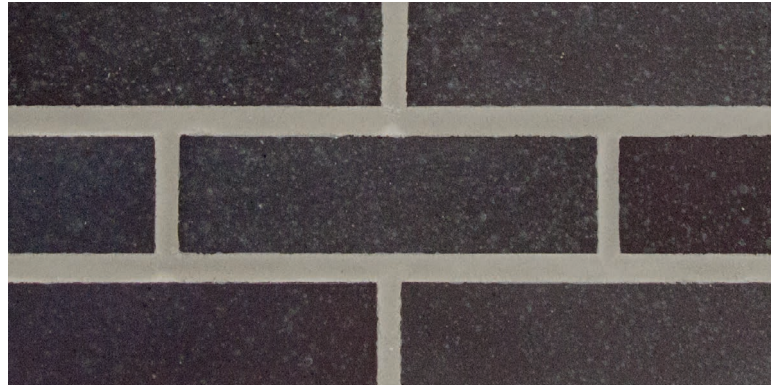


Manganese Ironspot



Orleans Sands

TEXTURES



Smooth

Available in 1/2"
and 1" thick.



Vertical Score

Available in:
• 5/8" thick
• Modular and Closure



Velour

Available in 1/2"
and 1" thick.



Artisan

Available in:
• 5/8" thick
• Modular and Closure



Matt

Available in:
• 5/8" thick
• Modular and Closure



Heritage

Available in 5/8"
and 1" thick.

TEXTURES



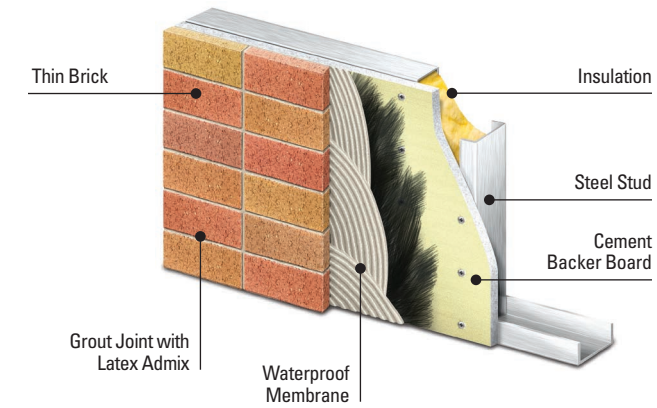
Square Edge no Texture

Available in 1/2" thick.

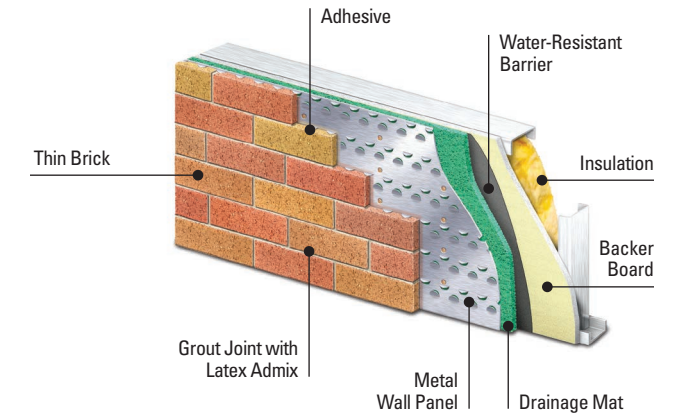
APPLICATIONS

Some of the more common application processes for thin brick include:

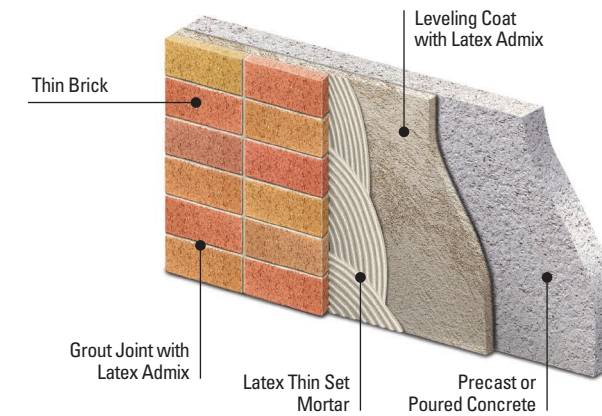
PANEL SYSTEM Prefabricated or On-Site Panelization



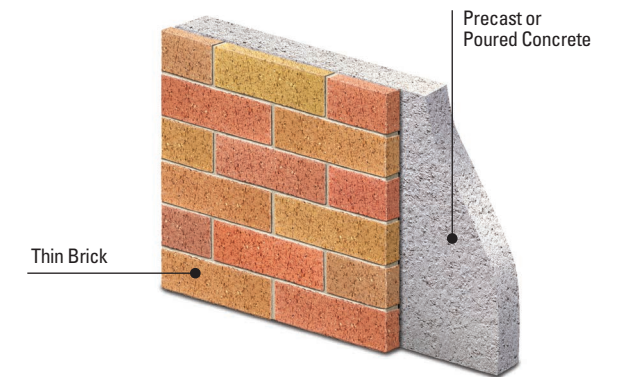
METAL PANEL WALL SYSTEM Prefabricated or On-Site Panelization



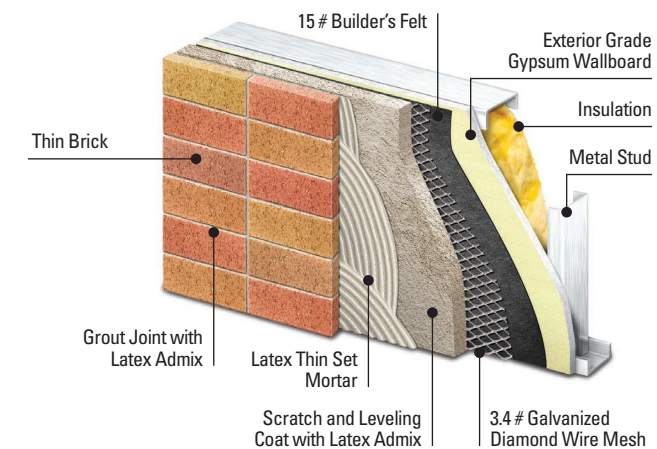
THIN BED SYSTEM WITH LEVELING COAT Job Applied Over Precast or Poured in Place Concrete



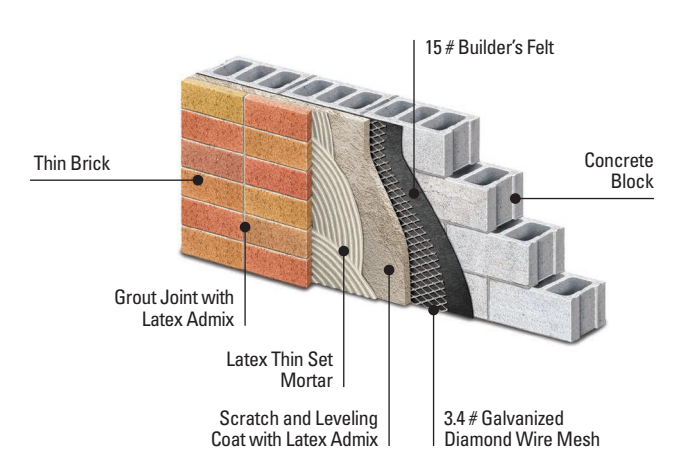
THIN BRICK SYSTEM Embedded in Precast Concrete



MORTAR BED SYSTEM Prefabricated or On-Site Panelization



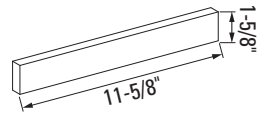
MORTAR BED SYSTEM Concrete Block Infill Wall or Existing Masonry



SIZES

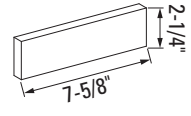
ROMAN

1-5/8" x 11-5/8"



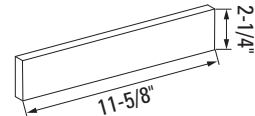
MODULAR

2-1/4" x 7-5/8"



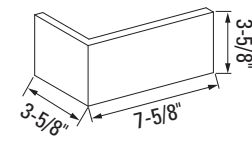
NORMAN

2-1/4" x 11-5/8"



BC448

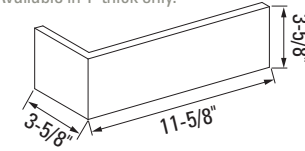
3-5/8" x 7-5/8" x 3-5/8"



BC4412

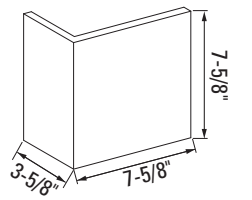
3-5/8" x 11-5/8" x 3-5/8"

NOTE: Available in 1" thick only.



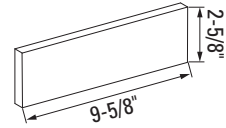
BC848

3-5/8" x 7-5/8" x 7-5/8"



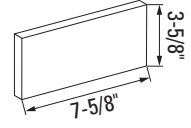
KINGSIZE

2-5/8" x 9-5/8"



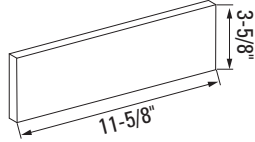
CLOSURE

3-5/8" x 7-5/8"



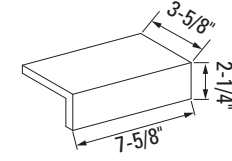
UTILITY

3-5/8" x 11-5/8"



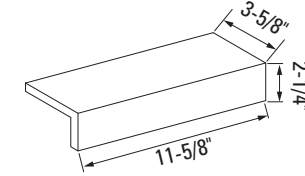
EDGE CAP A

3-5/8" x 7-5/8" x 2-1/4"



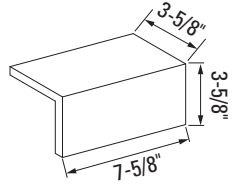
EDGE CAP B

3-5/8" x 11-5/8" x 2-1/4"



EDGE CAP C

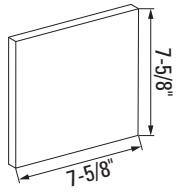
3-5/8" x 7-5/8" x 3-5/8"



TRIPLE

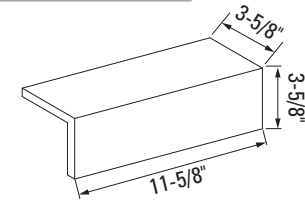
7-5/8" x 7-5/8"

NOTE: Available in 1/2" and 5/8" thick only.



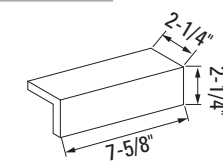
EDGE CAP D

3-5/8" x 11-5/8" x 3-5/8"



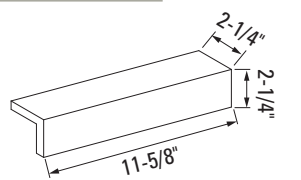
EDGE CAP E

2-1/4" x 7-5/8" x 2-1/4"



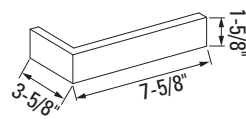
EDGE CAP F

2-1/4" x 11-5/8" x 2-1/4"



BC1-5/8" 48

3-5/8" x 7-5/8" x 1-5/8"



BC1-5/8" 412

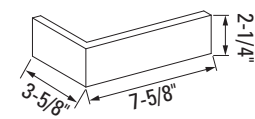
3-5/8" x 11-5/8" x 1-5/8"

NOTE: Available in 1" thick only.



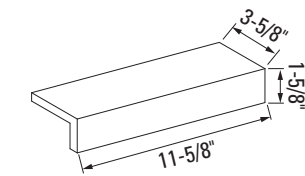
BC2-1/4" 48

3-5/8" x 7-5/8" x 2-1/4"



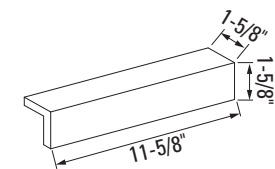
EDGE CAP G

3-5/8" x 11-5/8" x 1-5/8"



EDGE CAP H

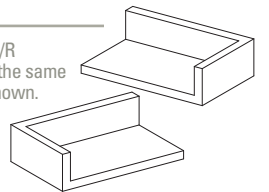
1-5/8" x 11-5/8" x 1-5/8"



EDGE CAP CORNERS

Left/Right

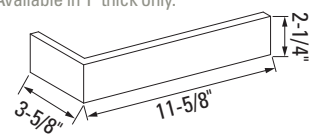
NOTE: 3-Sided L/R dimensions are the same as Edge Caps shown.



BC2-1/4" 412

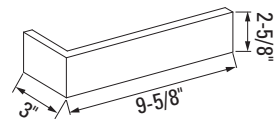
3-5/8" x 11-5/8" x 2-1/4"

NOTE: Available in 1" thick only.



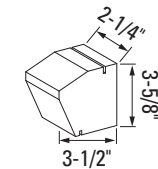
BC2-5/8" 310

3" x 9-5/8" x 2-5/8"



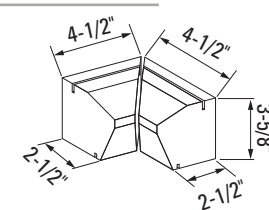
ROLOK SILL

2-1/4" x 3-1/2" x 3-5/8"



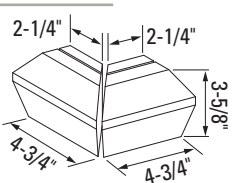
ROLOK SILL INTERNAL CORNER

4-1/2" x 2-1/2" x 3-5/8"



ROLOK SILL EXTERNAL CORNER

2-1/4" x 4-3/4" x 3-5/8"



CREIGHTON UNIVERSITY SCHOOL OF DENTISTRY



OMAHA
NEBRASKA



PROJECT DETAILS

COLOR

Burgundy Sands No Black
Autumn Sands No Black

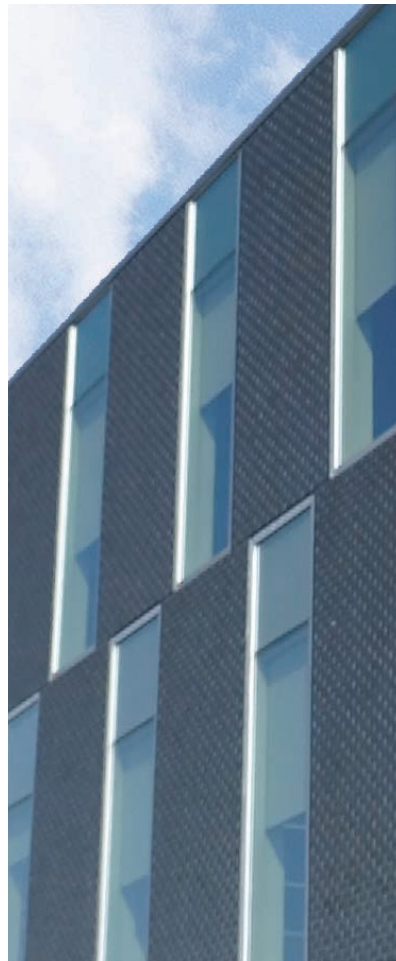
SIZE

Modular

TEXTURE

Square Edge

HONOR CREDIT UNION OPERATION CENTER



BERRIEN SPRINGS
MICHIGAN



PROJECT DETAILS

COLOR

Manganese Ironspot

SIZE

Modular

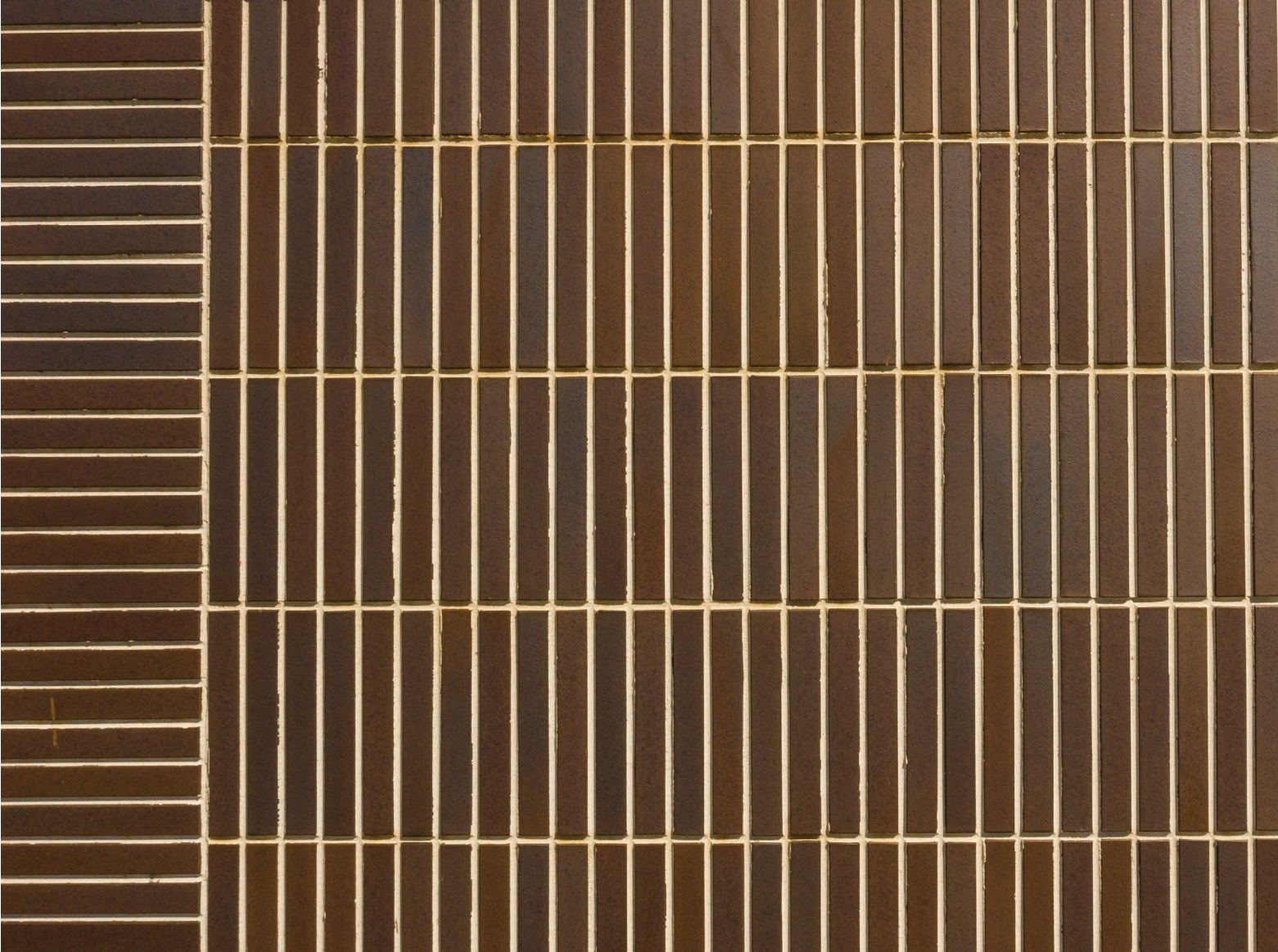
TEXTURE

Velour

HEART MINISTRY CENTER



OMAHA
NEBRASKA



PROJECT DETAILS

COLOR

Sienna Ironspot

SIZE

Roman

TEXTURE

Smooth

JOEY DTLA RESTAURANT



LOS ANGELES
CALIFORNIA



PROJECT DETAILS

COLOR

Ivory Blend

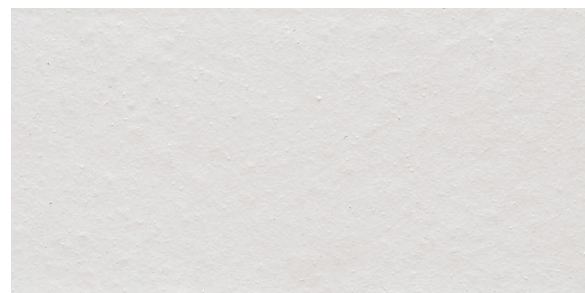
SIZE

Norman

TEXTURE

Velour

GLAZED SERIES



SN-1



SN-2



VC-1



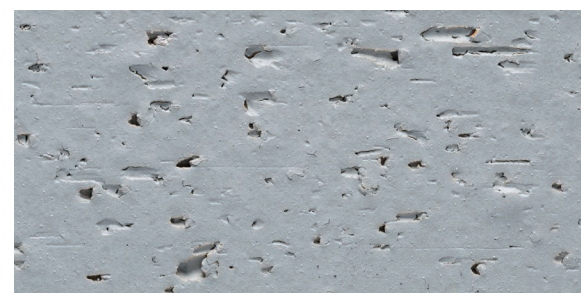
VC-2



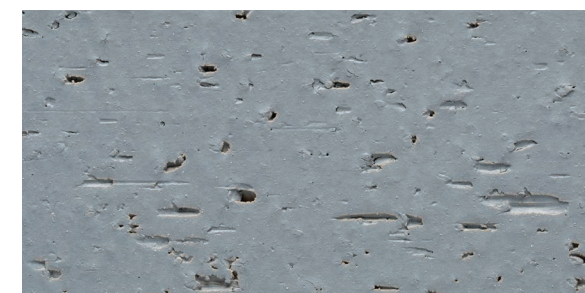
SN-3



SN-4



VC-3



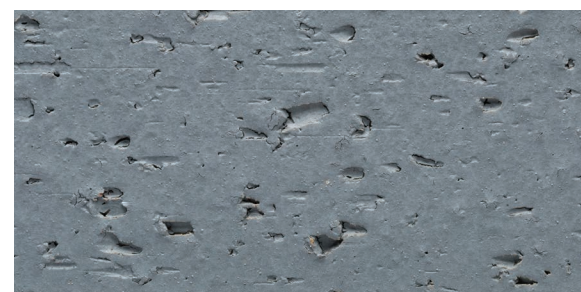
VC-4



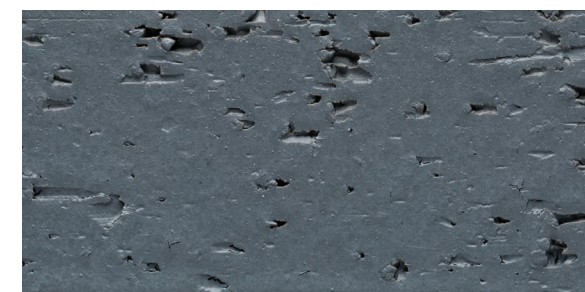
SN-5



SN-6



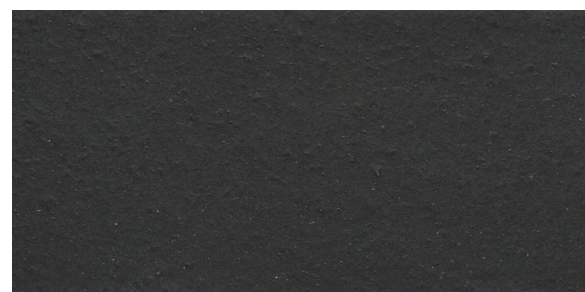
VC-5



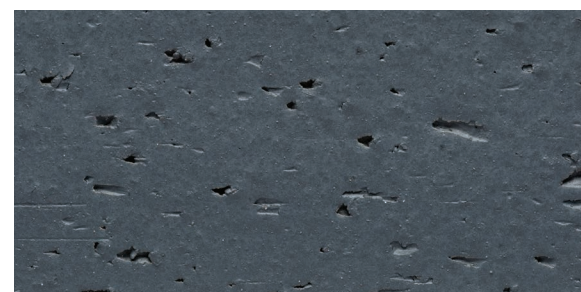
VC-6



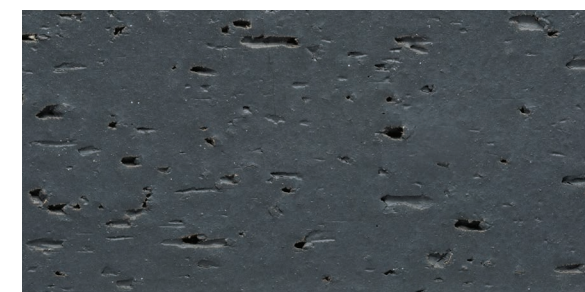
SN-7



SN-8



VC-7



VC-8



Endicott Thin Brick & Tile, LLC
P.O. Box 645 Fairbury, Nebraska USA 68352
P 402.729.3323 F 402.729.5804
endicott.com

