

CLAY PAVERS



NATURAL COLORFAST BEAUTY

A step above hardscape alternatives, the natural colorfast beauty of Endicott clay pavers empowers you to build your design vision from the ground up.

WHERE FORM
MEETS
FUNCTION.

ENDICOTT

NOTHING EXEMPLIFIES THE IDEA OF “WHERE FORM MEETS FUNCTION” BETTER THAN CLAY PAVERS FROM ENDICOTT. AS DURABLE AS THEY ARE STUNNING, AS INSPIRING AS THEY ARE PRACTICAL, ENDICOTT CLAY PAVERS ARE FORMED FROM NATURAL, COLORFAST MATERIALS AND FIRED AT TEMPS EXCEEDING 2,000 DEGREES FAHRENHEIT TO RESIST WEAR, COLOR-FADING, AND STAINING.

Paver Colors: Medium Ironspot #46 and #77, Dark Ironspot, Bordeaux Blend, Rose Blend

Outlets at San Clemente – San Clemente, CA

VILLANOVA UNIVERSITY



VILLANOVA
PENNSYLVANIA



PROJECT DETAILS

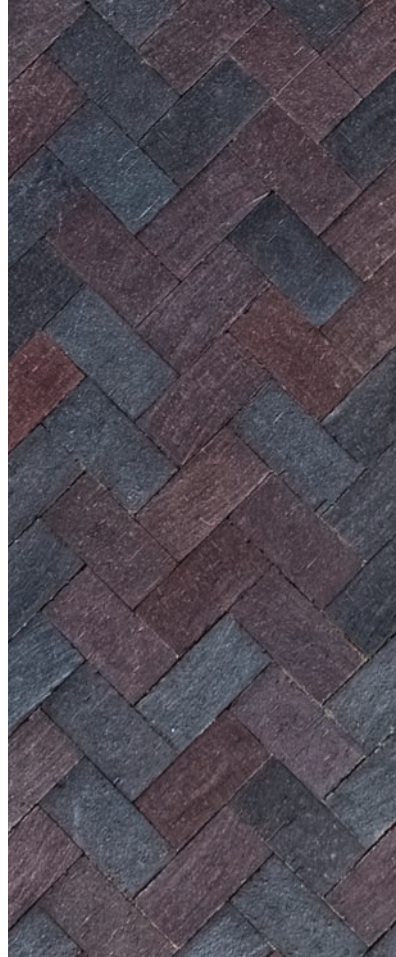
COLOR

Dark Ironspot
Medium Ironspot #46
Manganese Ironspot

SIZE/STYLE

2-5/8" x 4" x 8" Relieved Edge/Lugged
2-5/8" x 4" x 8" Permeable

DUBLIN STREETSCAPE



DUBLIN
OHIO



PROJECT DETAILS

COLOR

Medium Ironspot #46
Manganese Ironspot
Dark Ironspot

SIZE/STYLE

4" x 8" Relieved Edge/Lugged
4" x 8" Square Edge
4" x 8" Permeable

OUTLETS AT SAN CLEMENTE



SAN CLEMENTE
CALIFORNIA



PROJECT DETAILS

COLOR

Medium Ironspot #46
Dark Ironspot
Medium Ironspot #77
Bordeaux Blend
Rose Blend
Red Blend
Coppertone
Copper Canyon
Burgundy Blend

SIZE/STYLE

4" x 8" Relieved Edge/Lugged

COLORS



Rose Blend



Red Blend



Medium Ironspot #77



Medium Ironspot #46



Burgundy Blend



Bordeaux Blend



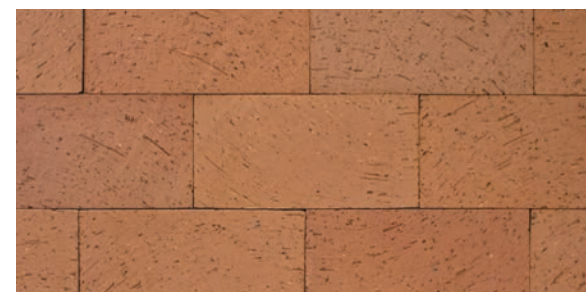
Dark Ironspot



Manganese Ironspot



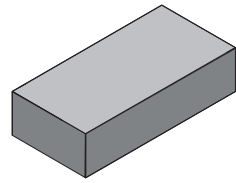
Coppertone



Copper Canyon

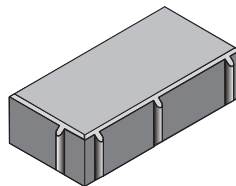
SIZES

4 x 8 PAVER

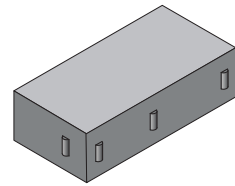


1-1/4" x 3-5/8" x 7-5/8" 2-1/4" x 3-5/8" x 7-5/8"

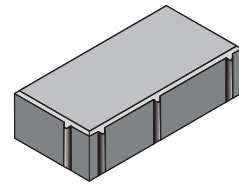
2-1/4 x 4 x 8 PERMEABLE PAVER



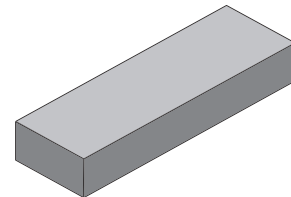
2-1/4 x 4 x 8 INVISI-LUG™ PAVER



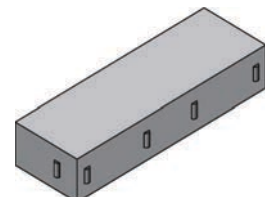
2-1/4 x 4 x 8 RELIEVED EDGE/LUGGED PAVER



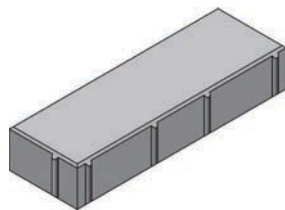
2-1/4 x 3-5/8 x 11-5/8 PLANK PAVER



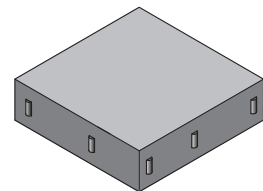
2-1/4 x 4 x 12 INVISI-LUG™ PLANK PAVER



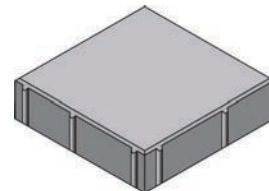
2-1/4 x 4 x 12 RELIEVED EDGE/LUGGED PLANK PAVER



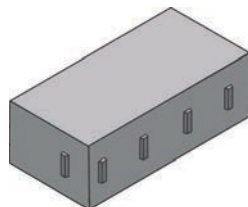
2-1/4 x 8 x 8 INVISI-LUG™ PAVER



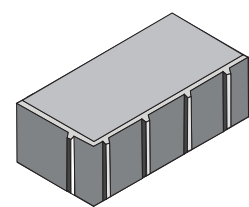
2-1/4 x 8 x 8 RELIEVED EDGE/LUGGED PAVER



2-5/8 x 4 x 8 INVISI-LUG™ PAVER

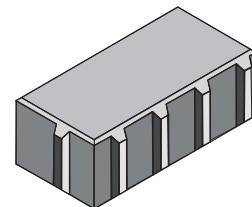


2-5/8 x 4 x 8 RELIEVED EDGE/LUGGED PAVER



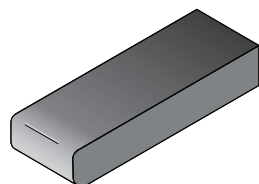
Effective: 2-5/8" x 4" x 8"
Actual: 2-7/8" x 4" x 8"

2-5/8 x 4 x 8 PERMEABLE PAVER



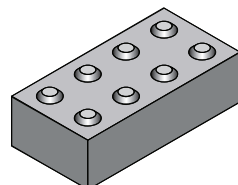
Effective: 2-5/8" x 4" x 8"
Actual: 2-7/8" x 4" x 8"

PAVER STEP TREAD



2-1/4" x 3-5/8" x 7-5/8"
2-1/4" x 3-5/8" x 11-5/8"

ADA HANDICAP DETECTABLE WARNING PAVER



2-1/4" x 3-5/8" x 7-5/8"
2-1/4" x 4" x 8"

NOTE: INVISI-LUG™ Pavers are patent pending.

INVISI-LUG™

WHO SAYS YOU CAN'T HAVE IT ALL?



THE NEW INVISI-LUG™ EXTRUDED CLAY PAVER GIVES YOU EVERYTHING YOU HAVE WANTED IN A PAVER:

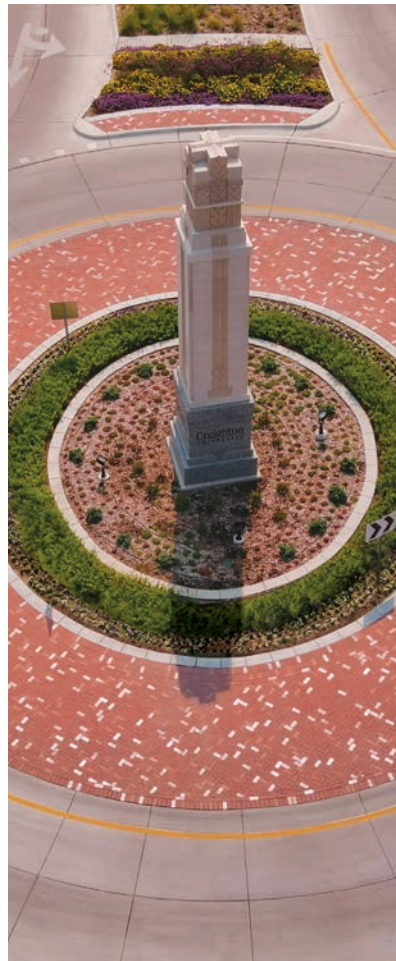
- A recessed lug that guarantees proper joint spacing to eliminate chippage.
- Because its lugs are recessed it leaves a crisp, square edge.
- Eliminates the need for buying plastic spacers, saving substantial cost.
- Since proper joint spacing is automatic, the speed of installation is improved.
- Improved joint line appearance.
- Especially in vehicular applications, full and proper joint spacing on sand-set pavers promotes interlock.

INVISI-LUG™ PAVER BENEFITS ARE IN ADDITION TO THE TRADITIONAL BENEFITS OF USING ENDICOTT CLAY PAVERS:

- Vibrant colors, including ironspots, that other materials cannot mimic.
- Colorfast.
- Durable.
- Incredibly high compressive strength.

WITH ENDICOTT'S INVISI-LUG™ PAVERS, YOU GET EVERYTHING YOU HAVE WANTED.

CREIGHTON UNIVERSITY ROUNDBABOUT



OMAHA
NEBRASKA



PROJECT DETAILS

COLOR

Burgundy Blend
Red Blend
Rose Blend
Medium Ironspot #77

SIZE/STYLE

2-5/8" x 4" x 8" Relieved Edge/Lugged

CITADEL OUTLETS MALL



LOS ANGELES
CALIFORNIA



PROJECT DETAILS

COLOR

Medium Ironspot #46
Dark Ironspot
Medium Ironspot #77
Bordeaux Blend
Coppertone
Copper Canyon

SIZE/STYLE

4" x 8" Relieved Edge/Lugged

HARLEY STREETSCAPE



FORT WORTH
TEXAS



PROJECT DETAILS

COLOR

Medium Ironspot #46
Medium Ironspot #77
Manganese Ironspot

SIZE/STYLE

4" x 8" Relieved Edge/Lugged
4" x 8" ADA



Endicott Clay Products Company

P.O. Box 17 Fairbury, Nebraska USA 68352

P 402.729.3315 F 402.729.5804

endicott.com

